



# MONTHLY MEMBERSHIP PROGRESS REPORT

District 321 D

Results as of: 5/31/2017

GMT: V S Kukreja

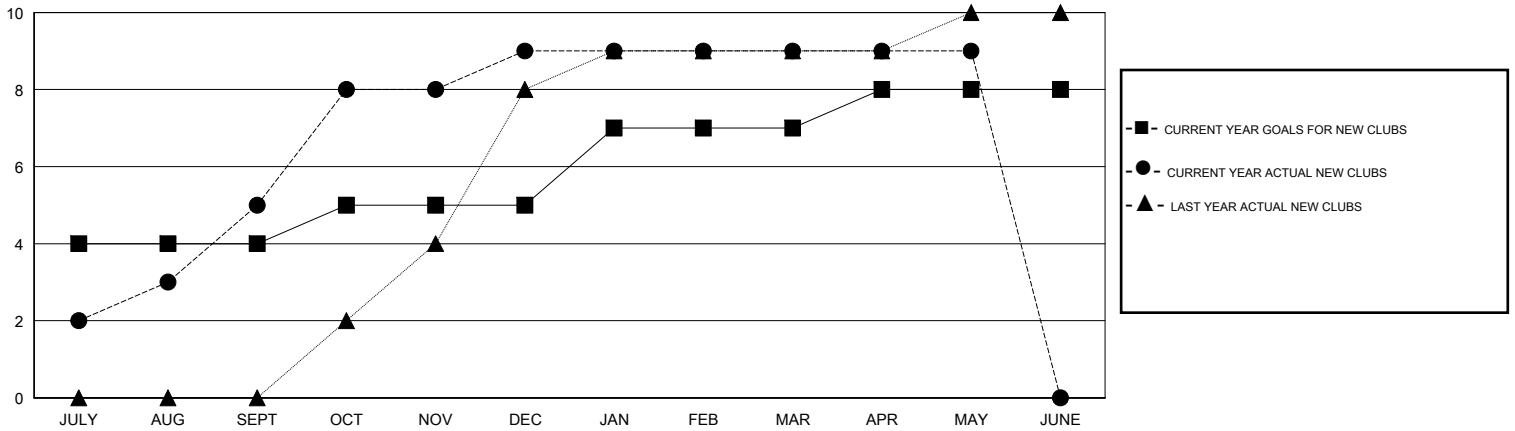
LOCATION INDIA

GMT CA

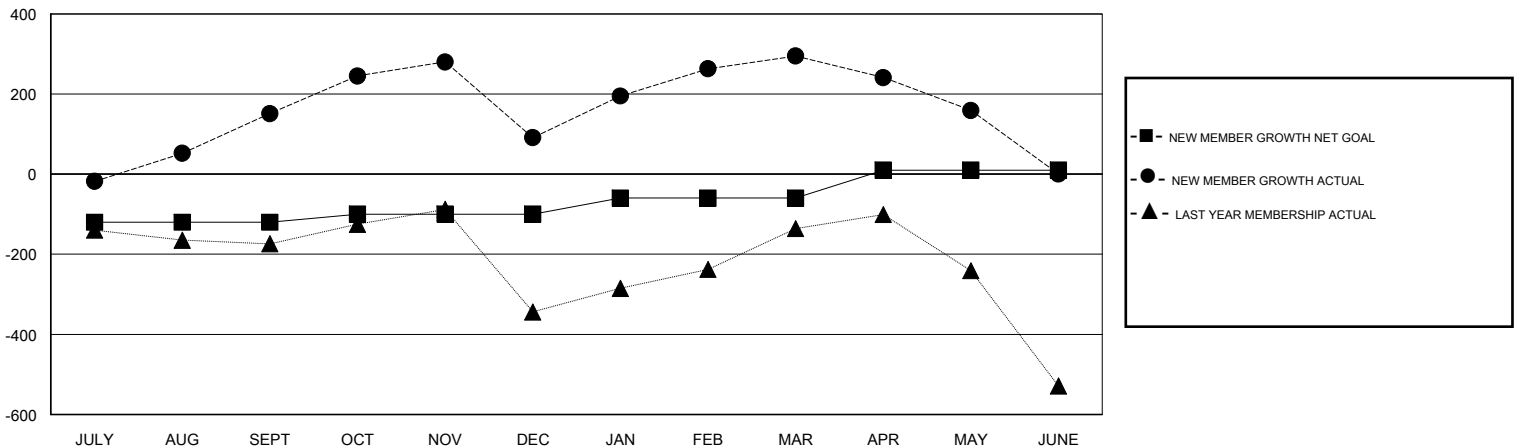
Clubs			
RESULTS FOR 2016-2017			
QUARTER	NEW CLUB GOAL	NEW CLUBS	DROPPED CLUBS
JULY/AUG/SEPT	4	5	1
OCT/NOV/DEC	1	4	10
JAN/FEB/MAR	2	0	4
APR/MAY/JUNE	1	0	1

Members			
RESULTS FOR 2016-2017			
QUARTER	NEW MEMBER GROWTH NET GOAL (not reinstated or transfers)	NEW MEMBER GROWTH ACTUAL (not reinstated or transfers)	DROPPED MEMBERS ACTUAL (including transfers)
JULY/AUG/SEPT	-120	420	269
OCT/NOV/DEC	20	323	383
JAN/FEB/MAR	40	382	178
APR/MAY/JUNE	70	137	273

GOALS AND ACTUAL NEW CLUBS CUMULATIVE



GOALS AND ACTUAL MEMBERS CUMULATIVE



DROPPED CLUBS: 16	109 CLUBS OF 149 ADDED 1 OR MORE NEW MEMBERS	<b>GENDER DISTRIBUTION</b>
		MALE 3,760 (76.91%)
		FEMALE 1,129 (23.09%)
<b>DROPPED MEMBERS</b>	<a href="#">CLICK HERE FOR CUMULATIVE MEMBERSHIP DATA</a>	TOTAL FAMILY UNIT MEMBERS 2,156
DECEASED 14		FAMILY MEMBERS PAYING HALF DUES 1,227
CLUB CANCELLED 345		
OTHER 744		
<b>TOTAL 1,103</b>		